

EVALUATION OF RESPIRATORY PROBLEMS AMONG WORKERS IN AN ASBESTOS TEXTILE FACTORY

AUTHORS

HERMANO ALBUQUERQUE DE CASTRO - FIOCRUZ

ALFRED LEMLE - UFRJ

LUIS CARLOS CORREIA ALVES - FNS

ANTONIO CHIBANTE - UNIRIO

VERA GOMES BOM - FIOCRUZ

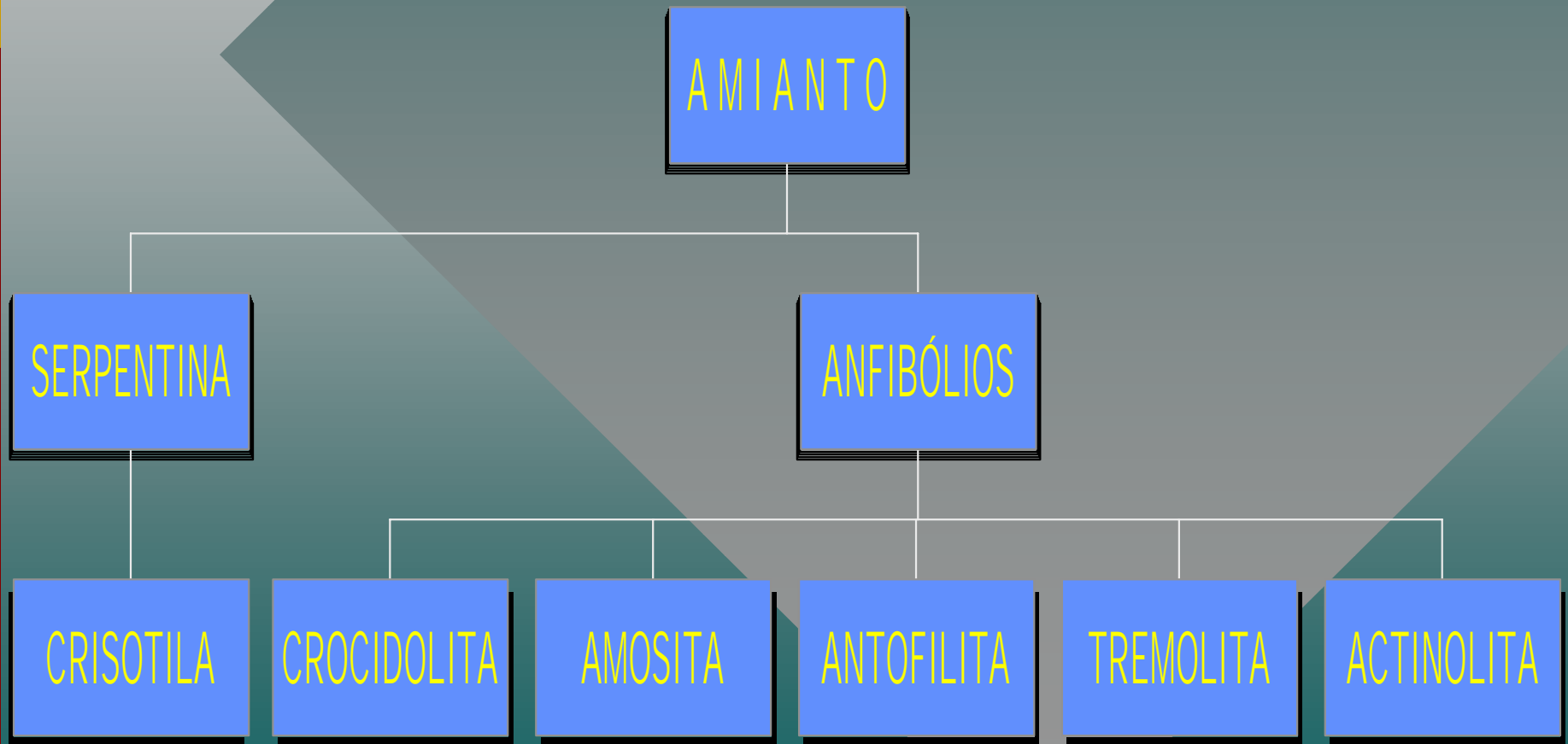
email: castro@ensp.fiocruz.br

INTRODUCTION

Asbestos is a mineral fibre used in the manufacture of more than 3,000 products. It has been the focus of debate in many parts of the world in recent years.

The harm caused to human health (asbestosis, lung cancer, mesothelioma etc.) puts asbestos top of the table of carcinogenic fibres.

CLASSIFICAÇÃO MINERAL DO AMIANTO



CASES OF ASBESTOS RELATED DISEASES

Occurrence

- Prior to 1983 - 50 cases of asbestosis and 2 cases of neoplasm of the lung described in Brazilian literature
- 1983 - 14 cases of asbestosis (Leme) - Dr. Riani
- 14 cases of asbestosis (Thermoide - SP)
- 21 mesotheliomas of the pleura/peritoneum

ASBESTOS RELATED DISEASES

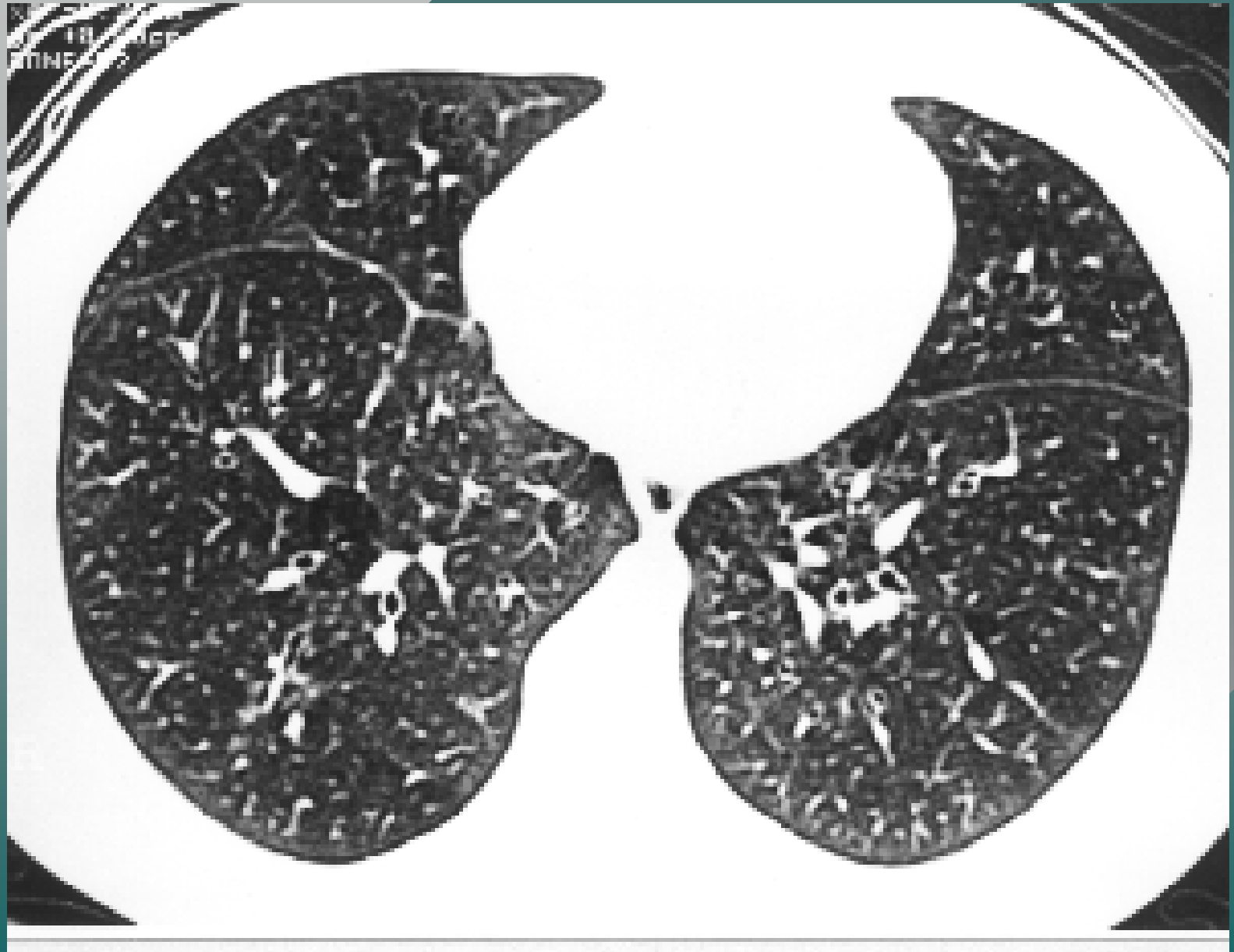
- Epler et al. - 58 histological diagnoses of asbestosis with only 6 showing alterations in their x-rays
- Kiper et al. - 25 histological diagnoses of asbestosis in 138 x-rayed workers
- Stapler et al. - 36 cases of asbestosis - High Resolution Computerised Tomography (TCAR) - out of 169 x-rayed with Rx 0/0 and 0/1

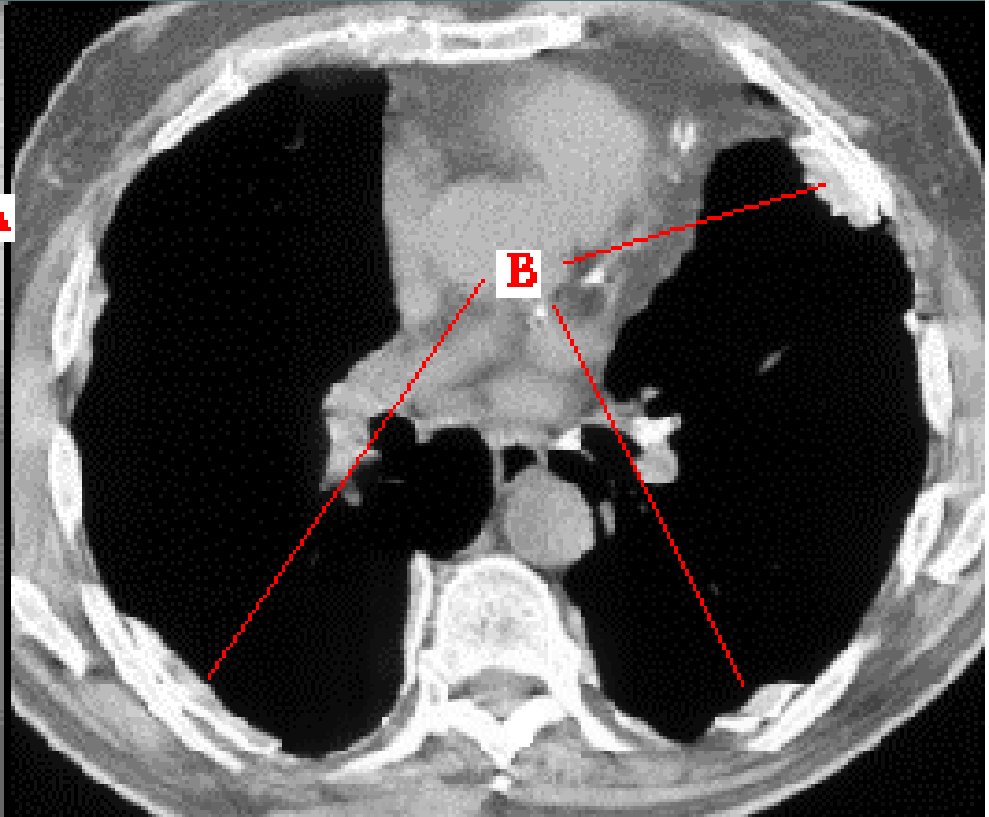
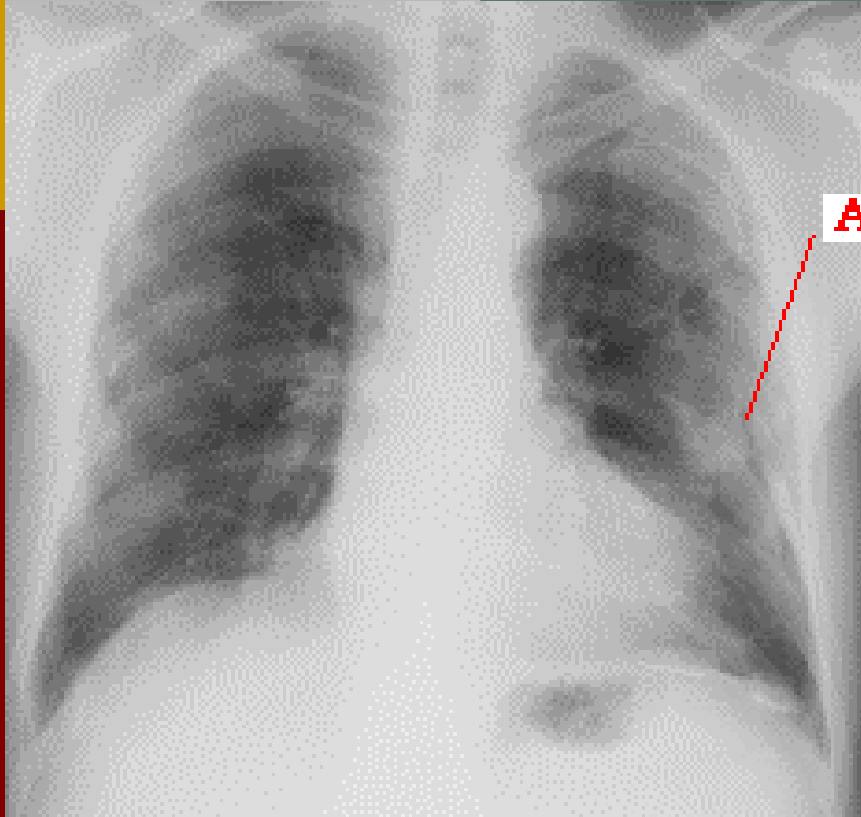
POPULATION STUDIED

- WORKERS EXPOSED TO ASBESTOS.
- 55% FEMALE.
- AGE = 48.4 ± 9.6 YEARS.

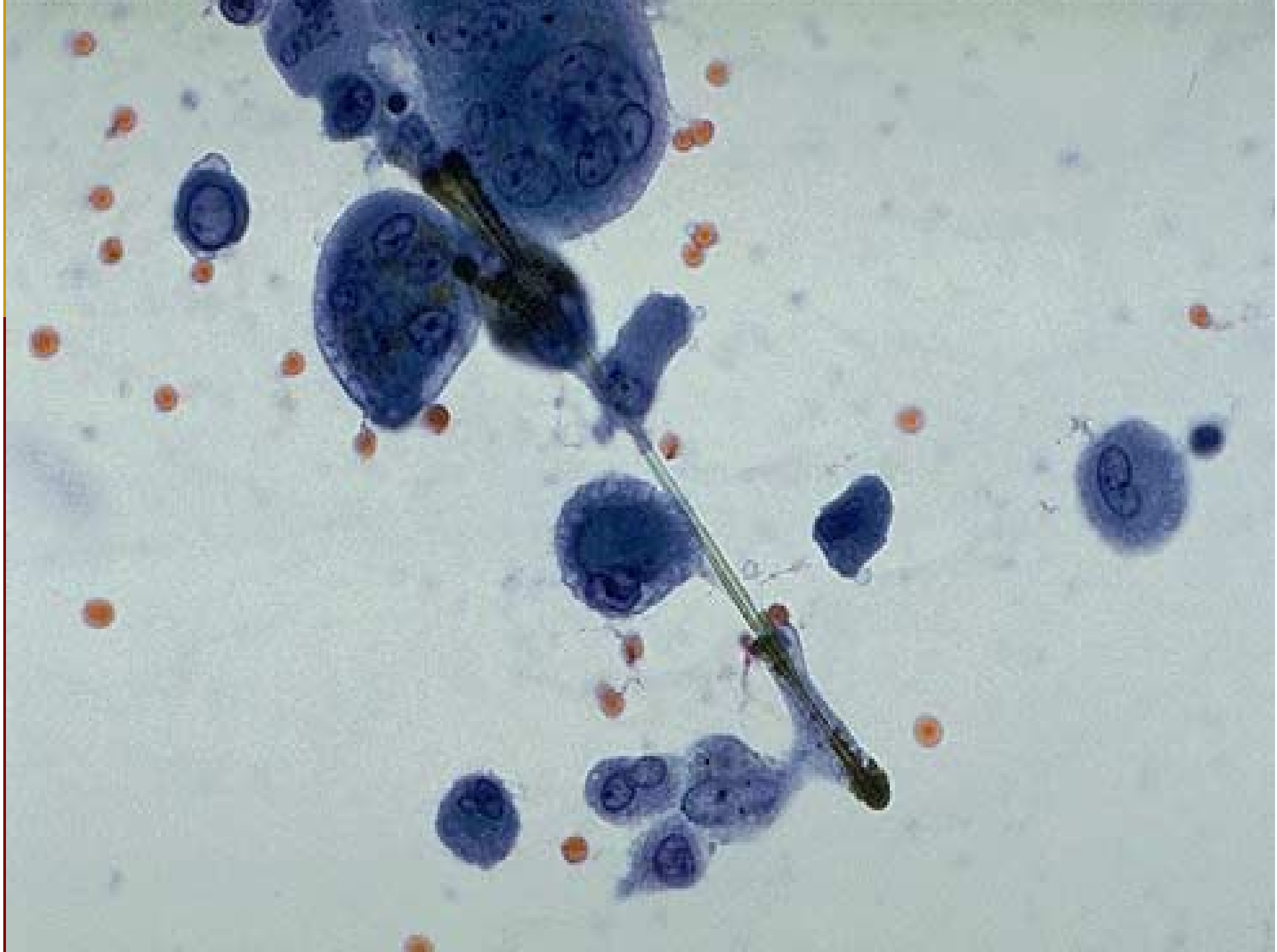
METHODOLOGY

- STANDARD QUESTIONNAIRE ON RESPIRATORY SYMPTOMS.
- X-RAYS IN CONFORMITY WITH ILO/80 CRITERIA.
- SPIROMETRY IN CONFORMITY WITH AMERICAN THORACIC SOCIETY STANDARDS.







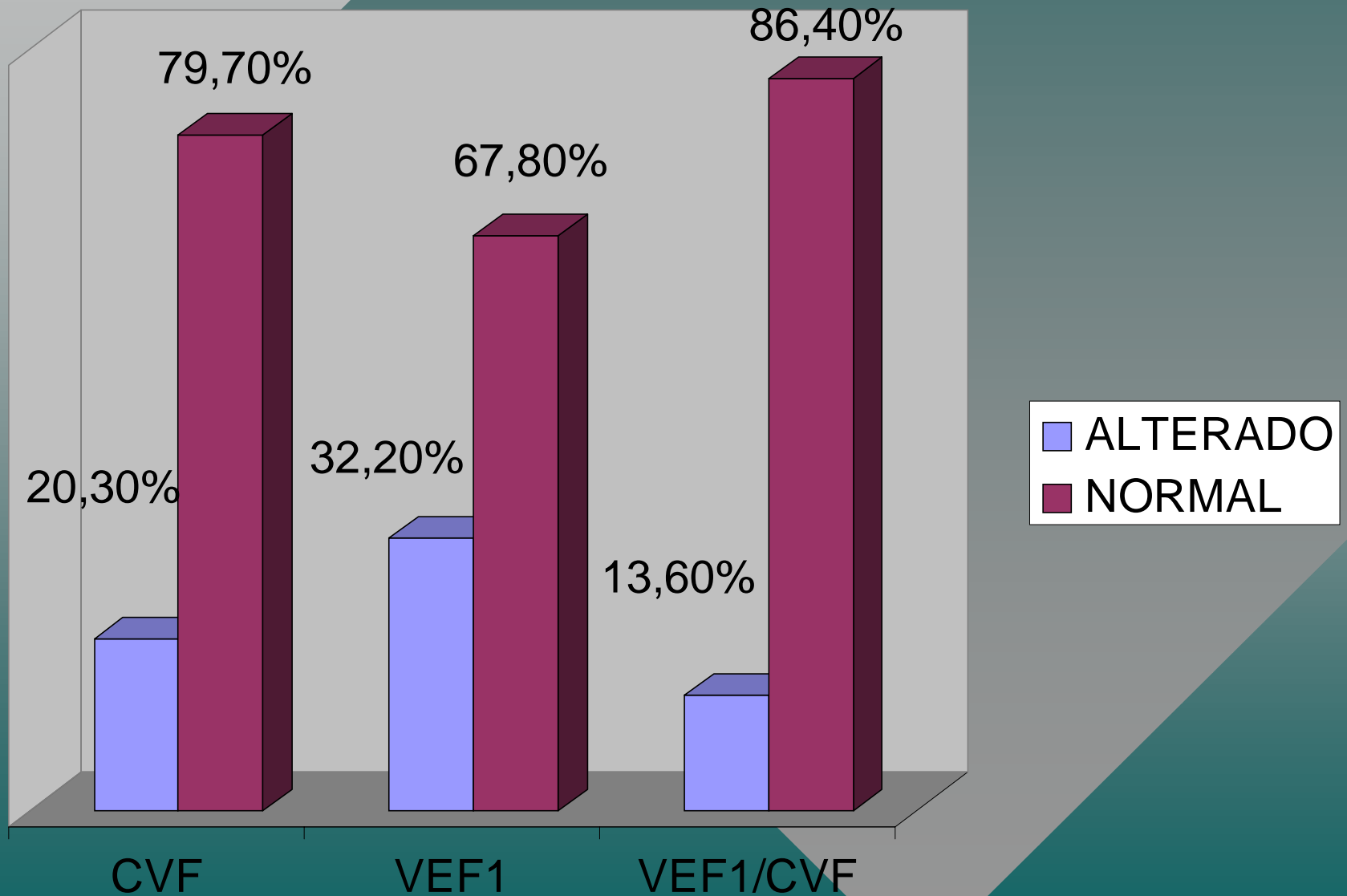


RESULTS

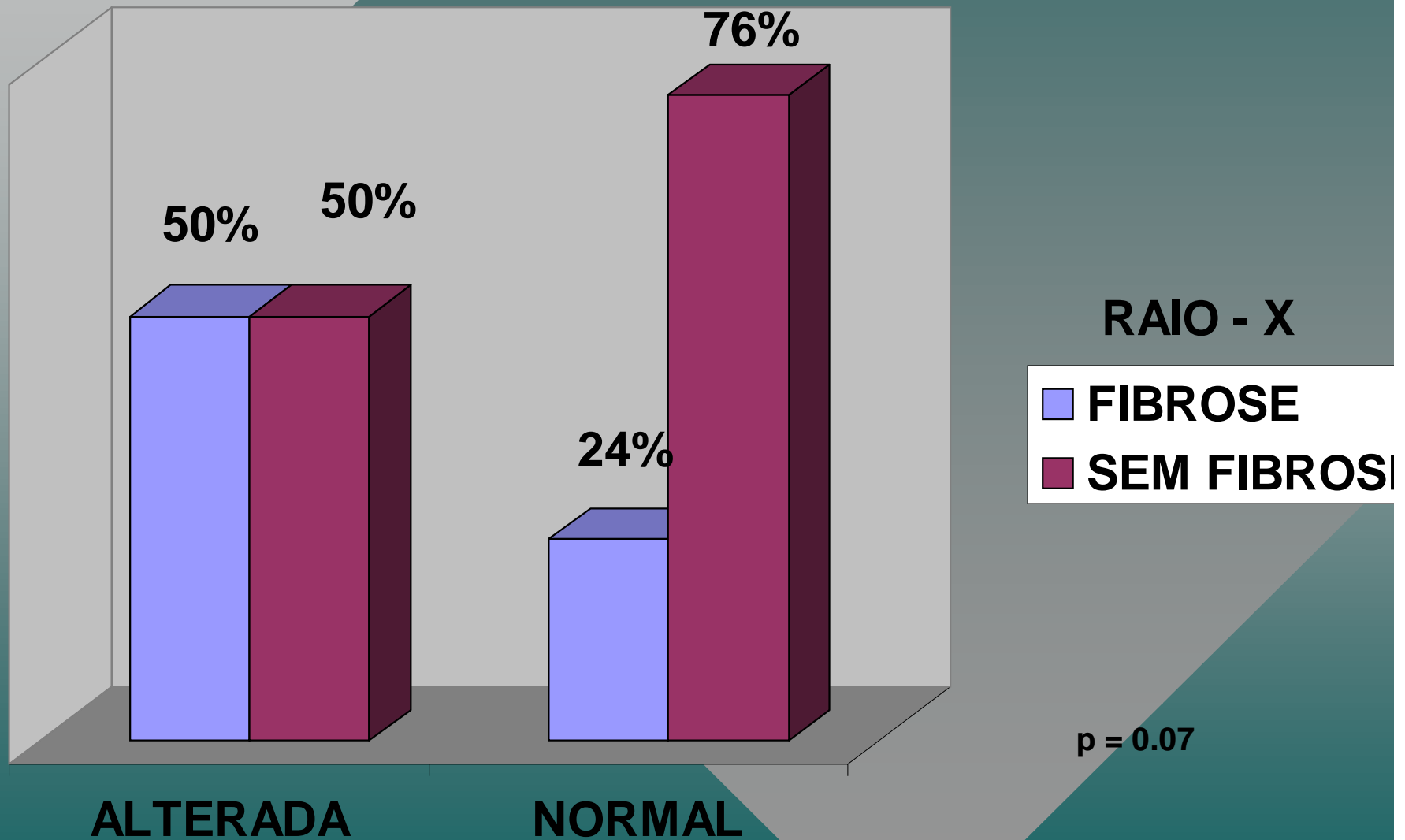
- WHEEZING 49 %
- COUGH 39 %
- EXPECTORATION 28 %

- LUNG FUNCTION
 - OBSTRUCTIVE 13 %
 - RESTRICTIVE 20 %

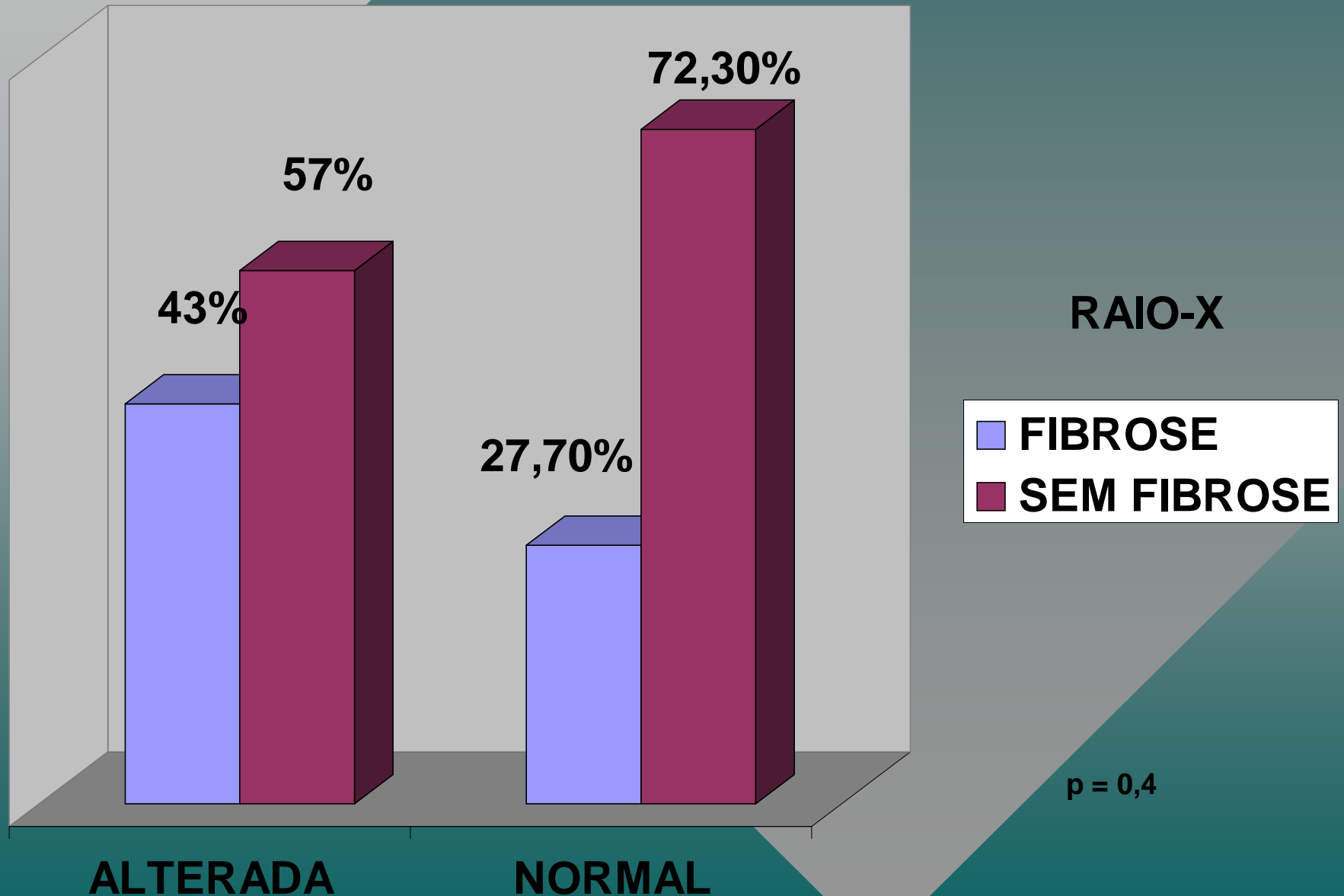
ALTERAÇÕES ESPIROMÉTRICAS



RELAÇÃO ENTRE CVF x RAIO-X



RELAÇÃO ENTRE VEF1/CVF x RAIO-X



CONCLUSION

- THE POPULATION STUDIED PRESENTED WITH A HIGH NUMBER OF RESPIRATORY SYMPTOMS
- THE RESTRICTIVE PICTURE IS POSSIBLY DUE TO PULMONARY FIBROSIS
- THE CHANGES SHOWN BY X-RAYS ARE EXPLAINED BY THE PRESENCE OF ASBESTOS IN THE WORKPLACE

DISCUSSION

- THE HIGH NUMBER OF RESPIRATORY SYMPTOMS MAY BE ASSOCIATED WITH EXPOSURE TO ASBESTOS AT WORK
- THERE IS AN URGENT NEED TO ACTIVELY SEEK OUT CASES IN THE MAIN INDUSTRIES USING ASBESTOS.
- castro@ensp.fiocruz.br

NB

**BAN ASBESTOS:
CONTEMPLATE A BETTER
FUTURE FOR HUMANITY**

Press HOME key to return to first slide